

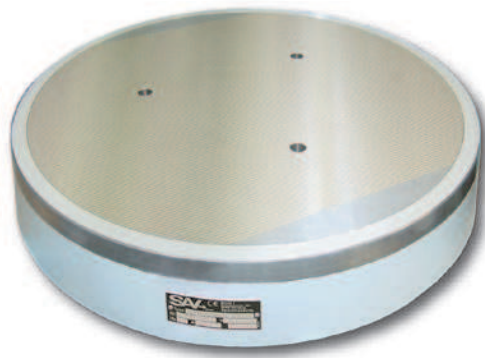
## Electro-Permanent Magnetic Circular Chuck

SAV 244.73

With parallel pole pitch  $P=4$  mm

Fine pole pitch for thin workpieces.

Developed especially for universal use on circular grinding machines. Double, enhanced magnetic system for extreme high holding forces at low magnetic field height.

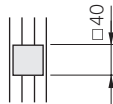


### Use:

For grinding of thin, plate-shaped workpieces.

- Grinding of thin plates, wide rings with small thickness and minimum width of 40 mm
- for workpieces with minimum thickness  $X = 2$  mm

- for flat workpieces with min. dimensions of  $a = 40 \times 40 \text{ mm}^2$



### Execution:

- pole plate with very small pole pitch, 3 mm steel and 1 mm brass
- low height
- laminations glued and reinforced with tie bars
- high precision due to fine grid pole plate to body connection
- low magnetic field height
- switching off through demagnetizing cycle
- heat treated tension free body
- threaded mounting holes in backside. Through holes on request.
- electro-permanent magnetic system for absolute safe operation during power failure
- pole plate surface wearing limit 8 mm
- robust und waterproof
- sealed to IP 65
- for use with control unit type SAV 876.10 (see chapter 4)

### Nominal operating voltage

- 360 V DC

### Nominal holding force

- 100 N/cm<sup>2</sup>
- adjustable with control unit with encoded switch

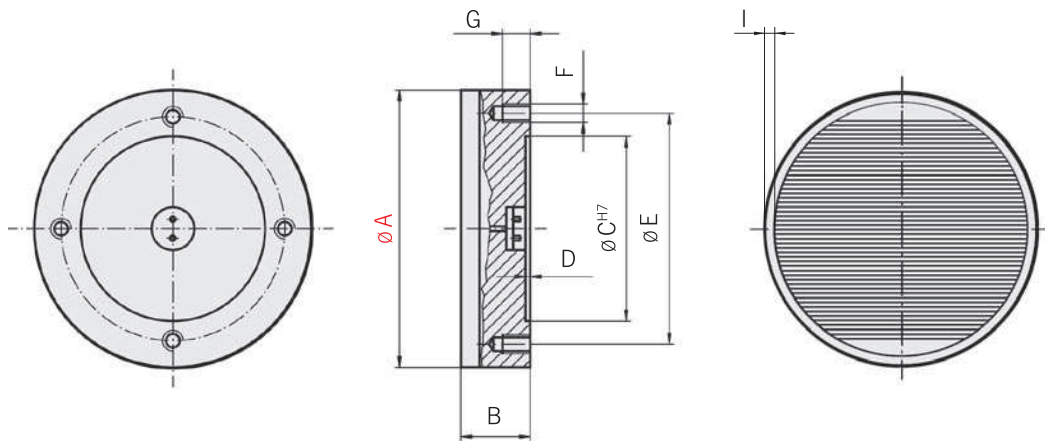
### Scope of supply:

- lifting bolts on larger models.
- electrical connection with terminals in centre of backside
- on request available with industrial watertight plug-in type connector

## Electro-Permanent Magnetic Circular Chuck

SAV 244.73

With parallel pole pitch P=4 mm



A	B	C	D	Dimensions in mm				Weight in kg	Chuck voltage in Vdc	Control unit max. current in A	Suitable control unit
				E	F	G	I				
300	100	160	3	190	M12 (4x)	16	16	55	360 V	30	876.10
400	100	210	4	250	M12 (6x)	16	21	98	360 V	30	876.10
500	100	280	4	320	M12 (6x)	16	21	153	360 V	30	876.10
600	100	350	4	390	M12 (6x)	18	21	220	360 V	60	876.10
700	100	400	4	450	M12 (6x)	18	21	300	360 V	60	876.10
800	100	450	4	500	M16 (6x)	18	22	392	360 V	60	876.10

other dimensions available on request