

ELECTRO MAGNETIC CIRCULAR CHUCKS

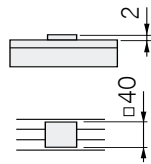


SAV 244.43

With parallel pole pitch $P=4$ mm

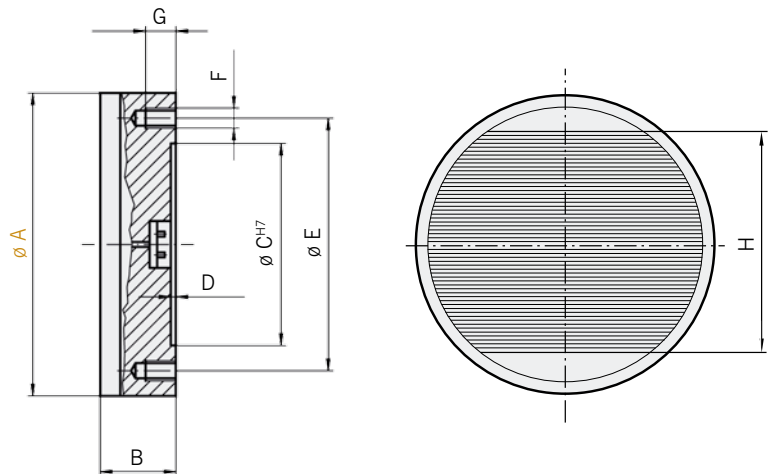
Use:

- Grinding of thin plates and thin, broad rings with a min. width of 40 mm
- For workpieces of 2 mm and above
- For flat workpieces with a min. surface area of 40 x 40 mm²



Features:

- Pole plate especially fine, uninterrupted pole pitch, 3 mm steel and 1 mm brass
- Low build height
- Glued laminations reinforced with additional pull anchors
- High precision due to fine grid pole plate to body connection
- Low field height of 4 mm
- De-activation via the demagnetizing cycle
- Fixing hole template for tapped holes on the rear or through holes upon agreement
- 8 mm pole plate wear limit
- Robust and waterproof
- Protection classification IP 65
- Suitable for use with control unit SAV 876.10



Nominal operating voltage:

110 V DC

Nominal holding force:

100 N/cm²,

Adjustable using the holding force coding switch on the control unit

Auxiliary equipment:

- Lifting bolts for transportation on larger models.
- In the standard format the electrical connector is on the rear side, centred with clamps.
- Controller and hand-held control unit not included in delivery.

| Dimensions in mm | | | | | | | | Power rating in W | Weight in kg | Type of control |
|------------------|-----|-----|---|-----|----------|----|-----|-------------------|--------------|-----------------|
| A | B | C | D | E | F | G | H | | | |
| 300 | 100 | 160 | 4 | 190 | M12 (4x) | 16 | 213 | 110 | 55 | E 4 |
| 400 | 100 | 210 | 4 | 250 | M12 (6x) | 16 | 301 | 180 | 98 | E 4 |
| 500 | 100 | 280 | 4 | 320 | M12 (6x) | 16 | 401 | 230 | 153 | E 4 |
| 600 | 100 | 350 | 4 | 390 | M12 (6x) | 18 | 481 | 410 | 220 | E 4 |
| 700 | 100 | 400 | 4 | 450 | M12 (6x) | 18 | 581 | 430 | 300 | E 4 |
| 800 | 100 | 450 | 4 | 500 | M16 (6x) | 18 | 681 | 540 | 392 | E 4 |

Ordering example:

Electro magnetic circular chuck SAV 244.43 - 300 - 110 V
Ordering key SAV - No. - A - Voltage

Ordering example control unit:

Electr.polarity-reversing control unit SAV 876.10 - S-0-110/6/230
Hand-held control unit SAV 876.02 - SE3
Ordering key SAV - No.

Recommended controller and control unit:

| Type | Control unit | Hand-held control unit |
|------|--------------------------|------------------------|
| E 4 | SAV 876.10-S-0-110/6/230 | SAV 876.02-SE3 |

For built-in control unit see page 48.