

Neodymium Magnetic Chuck

SAV 243.10

With transverse pole pitch $P=6$ mm neodymium-iron-boron magnets, extremely high holding force

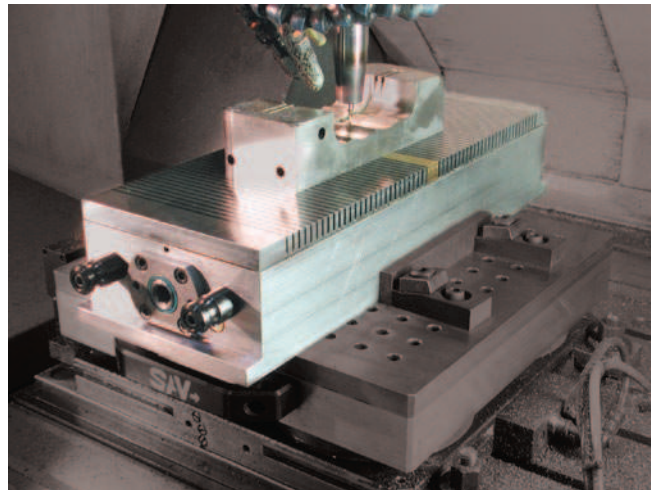
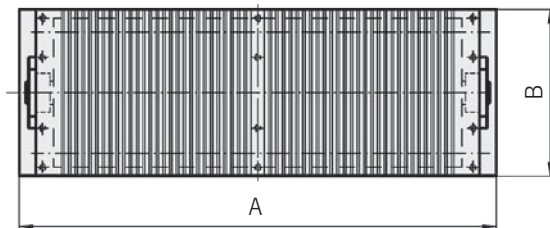
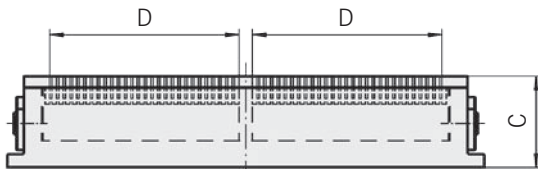
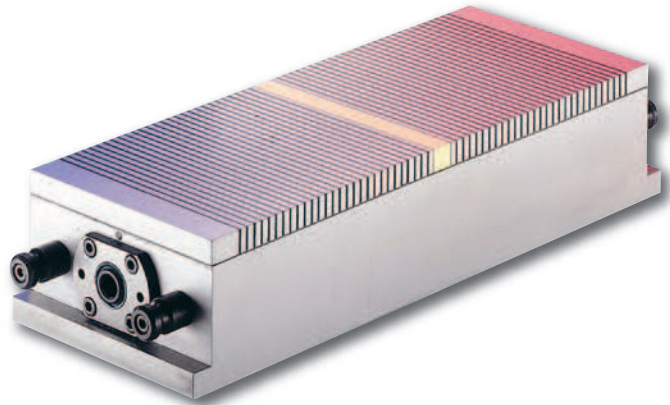
Use:

For workpieces that are particularly difficult to clamp, such as ferrotic and hard metals containing cobalt, as well as very small workpieces.

Features:

Extremely high holding force due to a specially developed construction. Stable all-steel body. ON-OFF control on both end faces. Larger models - with power-operated switching mechanism - available on request. Laminations 4 mm St and 2 mm cast resin with NdFeB magnets in the pole gaps.

Nominal holding force: 180 N/cm²
 Magnetic field height: ca. 10 mm
 Pole plate wearing limit: 3 mm



Dimensions in mm				Weight in kg
A	B	C ^{+9.5} ₋₂	D	
400	150	82	171	35.0

Special sizes on request.

Ordering example: **Neodymium Magnetic Chuck SAV 243.10**
 Ordering key: Name SAV - No.