

Magnet Pallet

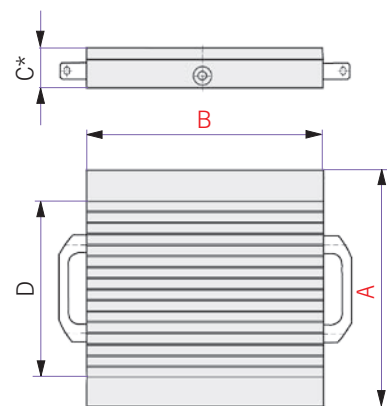
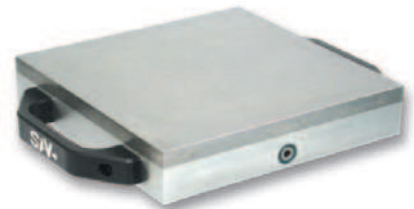
SAV 220.30

Material:

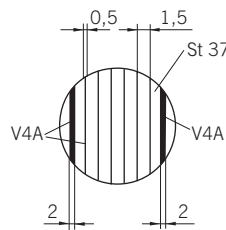
Aluminium base with St 37 / stainless steel (V4A) Pole pate

Technical Specifications:

- Parallelism: < 0.01 mm
- Can be executed with threaded holes for side or angled stops
- Magnetic field height: 4 mm
- Pole plate wearing limit: 3 mm
- Holding force: 80 N/cm²
- Pole pitch: 1.9 mm



| System | Dimensions (mm) | | | | Switchable sections | Weight (kg) |
|--------|-----------------|-----|----|-------|---------------------|-------------|
| | A | B | C | D | | |
| 200 | 200 | 200 | 46 | - | 1 | 15.0 |
| 240 | 240 | 240 | 46 | 204.5 | 1 alt.2 | 19.0 |
| 280 | 280 | 280 | 67 | 204.5 | 2 | 25.0 |
| 320 | 320 | 320 | 58 | 246.0 | 2 alt.1 | 32.0 |
| 320 | 320 | 160 | 58 | 246.0 | 1 | 16.0 |



Ordering example: Magnet Pallet SAV 220.30 - 320 x 320 - Reference system* - Adaptation*
Ordering key: Name SAV-No. - A x B - Reference system* - Adaptation*

Power Magnet Pallet

SAV 220.31

Material:

Aluminium base with St 37 / stainless steel (V4A) Pole plate

Technical Specifications:

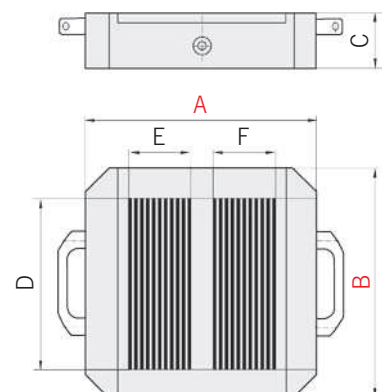
- Low weight with high holding force
- Parallelism: < 0.01 mm
- Pole plate wearing limit: 2 mm
- Holding force: 140 N/cm²
- Also available in stainless steel
- Can be executed with threaded holes for side or angled stops
- Low magnetic field height



and High Speed Cutting (HSC)



Important:
Workpiece does not require full magnetic surface!



| System | Dimensions (mm) | | | | | | Switchable sections | Weight (kg) |
|--------|-----------------|-----|----|-------|------|------|---------------------|-------------|
| | A | B | C* | D | E | F | | |
| 240 | 240 | 240 | 60 | 126.0 | - | - | 1 | 18.0 |
| 280 | 280 | 280 | 60 | 166.0 | 80.0 | 80.0 | 2 | 21.5 |
| 320 | 320 | 320 | 67 | 206.0 | 80.0 | 80.0 | 2 alt.1 | 25.0 |

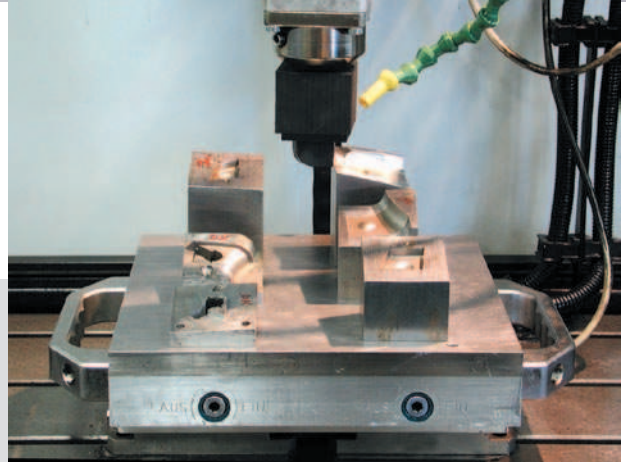
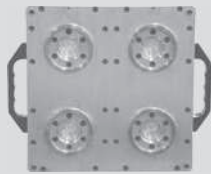
* is determine by reference systems

Ordering example: Power Magnet Pallet SAV 220.31 - 320 x 320 - Reference system* - Adaptation*
Ordering key: Name SAV - No - A x B - Reference system* - Adaptation*

Application Examples

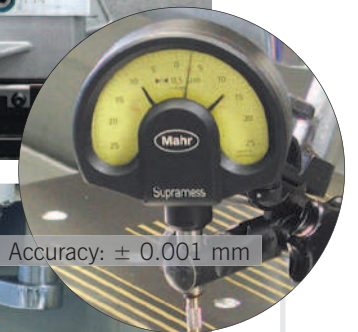
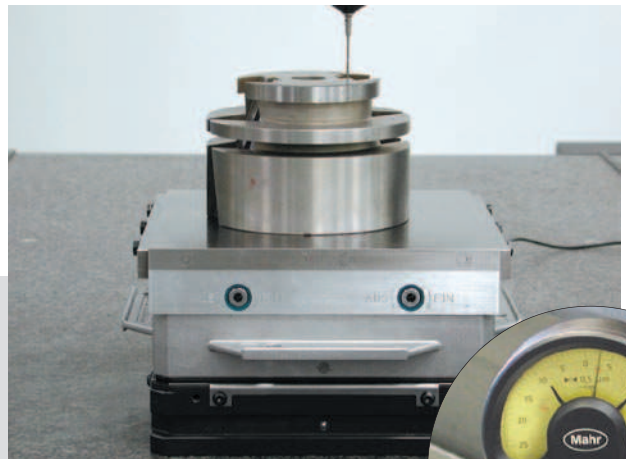
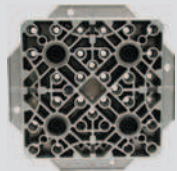
Pallet type:
Magnet Pallet

SAV 220.30 - 320 x 320
Reference system*



Pallet type:
Magnet Pallet

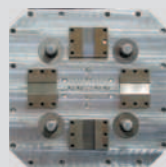
SAV 220.30 - 240 x 240
Reference system*



Accuracy: ± 0.001 mm

Pallet type:
POWER Magnet Pallet

SAV 220.31 - 320 x 320
Reference system*



*Please specify reference system and robot adaption;
we can advise!

Pallet type:
POWER Magnet Pallet
for HSC-Milling

SAV 220.31 - 320 x 320
Reference system*

